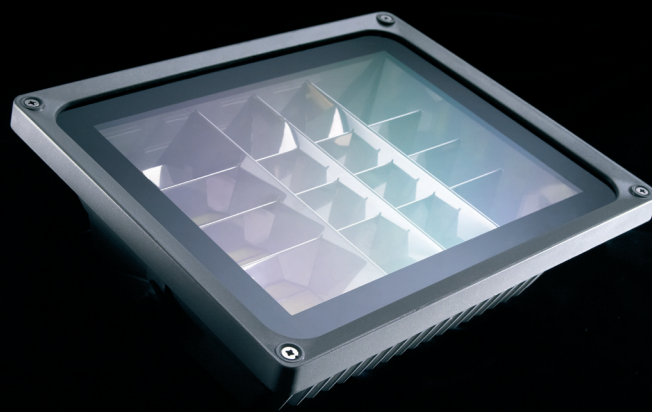


Note: Illustration and photometric information shown based upon 60W mode.



ZS LED Flood Light



Applications:

Internal and external flood lighting
Perimeter lighting
Security lighting
CCTV enhancement lighting

Options:

Colour temperature selection – CW,NW,WW
PIR activation

Specification

Wattage	8W	15W	30W	40W	60W	90W
Size (mm)	114 x 85 x 90	180 x 140 x 110	224 x 185 x 130	290 x 240 x 100	290 x 290 x 100	350 x 350 x 80
Power	7.9 – 8.6W	13.8 – 14W	30.8 – 31.2W	39.1 – 38.5W	55.3 – 58.9W	85 – 87W
Colour	3000 – 6000K					
Input voltage	AC100 – 240V					
Angle	96°	75°	74°	56.5°	61°	44.75°
Ambient temp	46°C	46°C	46°C	46°C	46°C	46°C
Life	>40,000 hours					
PF	0.98	0.96	0.95	0.95	0.96	0.98
Lumens	705	901	1908	2728	3825	5277
Distance in metres	5	6	7	8	10	
Lux (60W)	124	90	66	45	32	

For more information visit www.zetaled.co.uk

Zeta LED
Zeta Controls Ltd
Telford Road, Bicester
Oxfordshire OX26 4LB

Tel +44(0)1869 322500
Fax +44(0)1869 322614

The Zeta LED **ZS Flood Light** offers a low power alternative to traditionally high powered halogen and sodium flood lighting.

The Zeta ZS Flood Light range uses the latest LED Array and reflector technology to offer a low power LED lighting replacements to energy intensive flood lighting.

The IP rated units are perfect for outdoor perimeter lighting combined with CCTV camera for superb facial recognition.

Whether you are looking for a low level security light or an ultra bright flood light the ZS range has a low maintenance high efficiency solution.

 zeta
LED TECHNOLOGY